

OMNIBLAST-E

Modular LED floodlighting solution



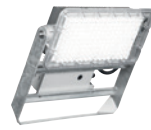
1-E MIDI



2-E MIDI



3-E MIDI



1-E MAXI



2-E MAXI



3-E MAXI



For project details



LOCALLY
manufactured



IP 66

Up to
IK 10

Up to
20kV



CONTROL

DMX



CIRCLE
LIGHT



Key advantages

- Manufactured in South Africa
- Cost-effective and efficient solution to maximise energy and maintenance savings
- Marine grade, high-pressure die-cast aluminium housing
- Designed to easily upgrade or replace the surge protection device, LEDs or drivers
- Designed to meet international sport federation lighting regulations
- Flexibility: modular approach for high-power applications (one-to-one replacement for up to 2000W HID lamps)
- Compliant with UHD/HD/4K broadcast and super slow motion replays (flicker-free)
- Instant switch on/off (static) - dynamic optional setting to create dramatic or theatrical effects
- Inclination angle adjustable on-site
- Surge protection 10kV/10kA
- Meeting Dark Sky requirements by using accessories such as vertical louvres and hoods
- Available in Zone 2 and 21/22 versions (MIDI only)
- 5-year warranty (Terms and conditions apply)

Characteristics

GENERAL INFORMATION

Testing standard	SANS 60598, SANS 62262, SANS 475	
Housing	Marine grade high-pressure die-cast aluminium (EN 1706 AC-44300)	
Protector	High-impact clear glass	MAXI only: High-impact UV-resistant polycarbonate (optional)
Housing finish	Unpainted aluminium	
Aerodynamic resistance (CxS) (up to)	0.445m ²	
Nominal voltage	198-264V – 50Hz	
Surge protection	10kV / 10kA	20kV / 20kA (optional)
Operating temperature range (Ta)	-20°C to +40°C	

OMNIBLAST	1-E MIDI	2-E MIDI	3-E MIDI	1-E MAXI	2-E MAXI	3-E MAXI
Wattage (up to)	390W	778W	1,170W	605W	1,211W	1,815W
Nominal flux (up to)	64,891lm	129,782lm	194,674lm	89,307lm	178,615lm	267,922lm
Luminaire output flux (up to)	55,806lm	111,613lm	167,420lm	76,804lm	153,609lm	230,413lm
Luminaire efficacy (up to)	143lm/W	143lm/W	143lm/W	127lm/W	127lm/W	127lm/W
Colour temperature	4000K (Neutral white 740); 5700K (Cool white 757) CRI ≥70					
Lifetime of the LEDs @Tq 25°C	100,000h - Up to L95B10					
Lifetime of the Driver @Tq 25°C	Up to 100,000h ≤10% failure rate					



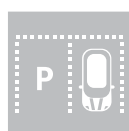
STADIUM



UNIVERSITY TRACK & FIELD



GOLF COURSE



AREA



INDUSTRIAL HARBOUR



HIGHMAST LIGHTING



INTERCHANGE

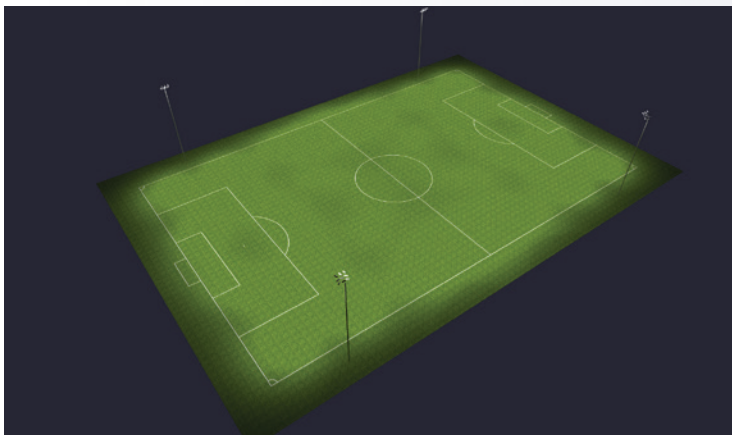


BRIDGE

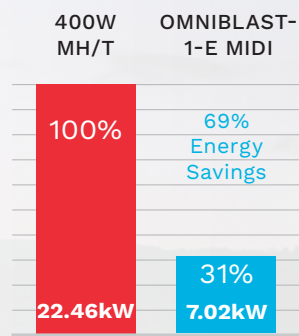
Case Studies



Recreational Sports - Soccer Field

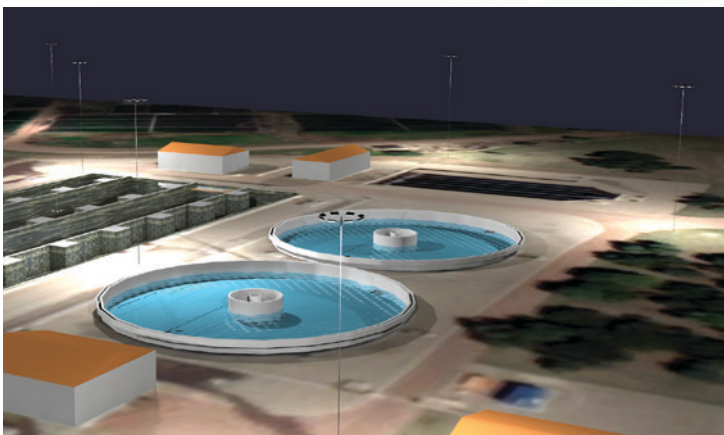


Energy Savings

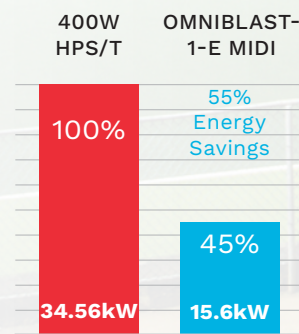


	Luminaire fitted with 400W Metal Halide lamp	OMNIBLAST-1-E MIDI 195W
Number of fittings over 4x20m masts	52	36
Energy used (kW)	22.46	7.02
Energy saved (kW)		15.44

Waste Water Plant



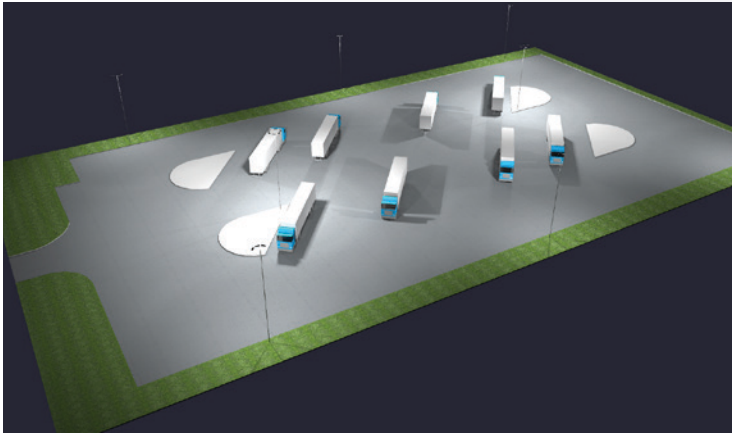
Energy Savings



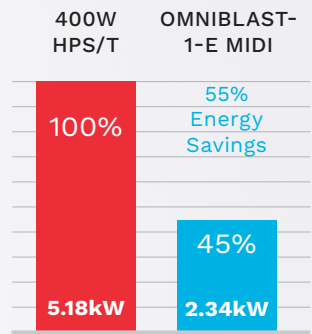
	Luminaire fitted with 400W High-Pressure Sodium lamp	OMNIBLAST-1-E MIDI 195W
Number of fittings	80	80
Energy used (kW)	34.56	15.6
Energy saved (kW)		18.96

Please note: Above calculations are for demonstration purposes, please contact us for detailed energy saving and return of investment calculations.

Industrial Area



Energy Savings

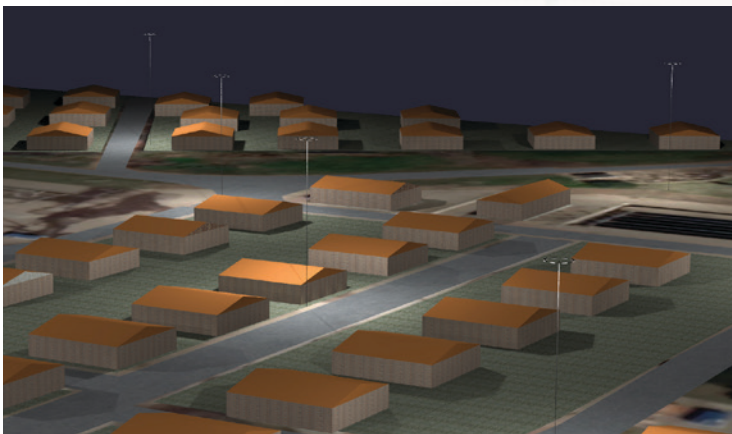


Luminaire fitted with 400W High-Pressure Sodium lamp

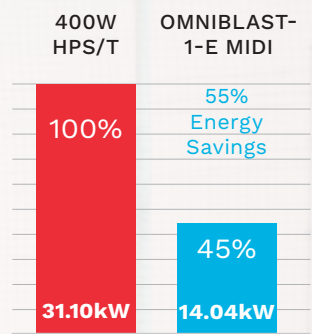
OMNIBLAST-1-E MIDI 195W

	Luminaire fitted with 400W High-Pressure Sodium lamp	OMNIBLAST-1-E MIDI 195W
Number of fittings	12	12
Energy used (kW)	5.18	2.34
Energy saved (kW)		2.84

Triangular Highmast Lighting



Energy Savings



Luminaire fitted with 400W High-Pressure Sodium lamp

OMNIBLAST-1-E MIDI 195W

	Luminaire fitted with 400W High-Pressure Sodium lamp	OMNIBLAST-1-E MIDI 195W
Number of fittings	72	72
Energy used (kW)	31.10	14.04
Energy saved (kW)		17.06

BEKA Schröder

Experts in lightability™

SABS
ISO 9001



www.beka-schreder.co.za

Designed and manufactured by BEKA Schröder (Pty) Ltd



LOCALLY
manufactured

2025-04

Copyright © BEKA Schröder (Pty) Ltd – 13 West View Road – Olifantsfontein (South Africa) • The information, descriptions and illustrations herein are of only an indicative nature. Due to advanced developments, we may be required to alter the characteristics of our products without notice. As these may present different characteristics according to the requirements of individual countries, we invite you to consult us.