

# SERIES 50

Decorative LED bulkhead



**LOCALLY**  
manufactured



# SERIES 50



Standard version  
(prismatic diffuser)



Optional opaque diffuser version

## Rectangular bulkhead luminaire range

The SERIES 50 is a favourite bulkhead due to its timeless and simple design. It is the ideal solution to beautify buildings and to provide area lighting for commercial developments, retail areas, shopping malls and public buildings.

The optional battery back-up version is the perfect solution for loadshedding. It provides four hours of back up lighting, and utilizes a fast-charging inverter, hence it charges up in time for the next loadshedding cycle.

High-quality materials are used to ensure a high ingress protection and non-discolouring diffuser. This, together with the long lifetime of the LEDs, and an easy installation procedure, makes the SERIES 50 the bulkhead of choice.

### Key advantages

- Designed and manufactured in South Africa
- Operating temperature (Ta): -20°C to +35°C
- Minimum 50,000hrs useful lifetime (L70B10)
- Effective high-power LED, 4000K at a colour rendering index  $\geq 70$
- Ingress protection - IP 65
- Marine grade high-pressure die-cast aluminium base
- High-impact acrylic diffuser
- Reduced light pollution
- 3-year warranty (Terms and conditions apply)



PUBLIC BUILDING



SHOPPING CENTRE



COMMERCIAL BUILDING



SPORT AREA



SECURITY LIGHTING

# Characteristics

## GENERAL INFORMATION

Recommended installation height	2m to 4m
FutureProof	Easy replacement of the photometric engine and electronic assembly on-site
Driver included	Yes
ROHS compliant	Yes
Testing standard	SANS 60598, SANS 62262

## HOUSING AND FINISH

Housing	Marine grade high-pressure die-cast aluminium (EN 1706 AC-44300)
Diffuser	High-impact acrylic <sup>(*)</sup>
Housing finish	Black (RAL 9017), Textured finish
Tightness level	IP 65
Maintenance	Easily accessible

(\*) Suitable for Food & Beverage industry

## DIMENSIONS AND MOUNTING

A (mm)	195
B (mm)	341
C (mm)	101
D (mm)	48
Weight (kg)	Up to 2.5

## ELECTRICAL INFORMATION

Electrical class	EU class I or II
Nominal voltage	230V +3%/-10% - 50Hz
Power factor	> 90% at full load
Electromagnetic compatibility (EMC)	SANS 55015:2013/A1:2015, SANS 61000-3-2:2014, SANS 61000-3-3:2013, SANS 61547:2009, SANS 62493:2015

## OPTICAL INFORMATION

LED colour temperature	4000K (Neutral white 740)
Colour rendering index (CRI)	≥ 70 (Neutral white 740)

## OPERATING CONDITIONS

Operating temperature range (Ta)	-20°C to +35°C
----------------------------------	----------------

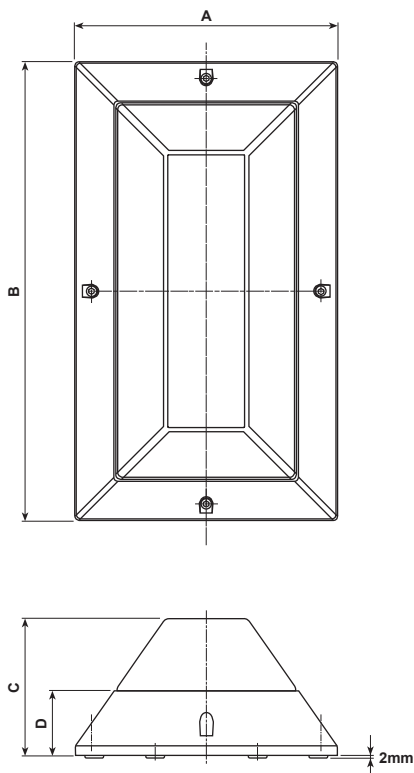
## LIFETIME OF THE LEDS @ TQ 25°C

For all versions	50,000h - L70B10
------------------	------------------

## LIFETIME OF THE DRIVER @ TQ 25°C

For all versions	50,000h ≤10% failure rate
------------------	---------------------------

For options and accessories, please turn to page 6.



# Performance



		Nominal flux (lm) <sup>(*)</sup>	Power consumption (W)	Nominal efficacy (lm/W)	Luminaire output flux (lm)	Luminaire efficacy (lm/W)
Luminaire	Line Current (A)	Typical	Typical	Typical	Typical	Typical
SERIES 50	0.03	1128	7	161	936	134
	0.06	2256	14	161	1872	134
SERIES 50 Battery back-up version	0.03	1128 / 356 <sup>(**)</sup>	7	161	936	134
	0.06	2256 / 712 <sup>(**)</sup>	14	161	1872	134

Tolerance on LED flux is  $\pm 7\%$  and on total luminaire power  $\pm 5\%$

<sup>(\*)</sup> The nominal flux is an indicative LED flux @ Ts 85°C based on LED manufacturer's data. The real flux output of the luminaire depends on environmental conditions (e.g. temperature and pollution) and the optical efficiency of luminaire. The type of LED used is subject to change due to the ongoing rapid progress taking place in LED technology.

<sup>(\*\*)</sup> Reduced output during battery back-up mode. Battery back-up of 4 hours.

## Construction Details

The luminaire consists of a marine grade high-pressure die-cast aluminium (EN 1706 AC-44300) base and trim ring, and an opaque or clear prismatic high-impact acrylic diffuser. It is designed to operate LEDs from 1128lm (7W) to 2256lm (14W).

The luminaire bears the SANS 60598-2-1 safety mark.

IP 65 in compliance with SANS 60598-2-1: The IP rating is certified by an SABS test report.

All base castings are finished both outside and inside in white epoxy powder coating for added protection and reflectivity. It is simple to install due to four mounting holes provided outside the optical compartment through lugs that form part of the base casting.

The trim ring casting is finished in a special multi-stage epoxy powder surface coating, is mounted onto the base casting by stainless steel M5 Allen head screws, located outside the optical compartment. The fixing holes can be supplied with stainless steel helicoil inserts on request.

An opaque or clear prismatic non-discolouring high-impact acrylic injection moulded diffuser is used throughout the range. It offers excellent vandal resistance, is highly translucent and will not discolour even when subjected to the harshest UV environments. A silicon sponge gasket is fitted into a special groove in the diffuser to prevent damage to the gasket during installation. It fits snugly over a tongue provided on the base casting, thus achieving the certified ingress protection rating of IP 65.

The electronic control gear is mounted directly onto the base casting.

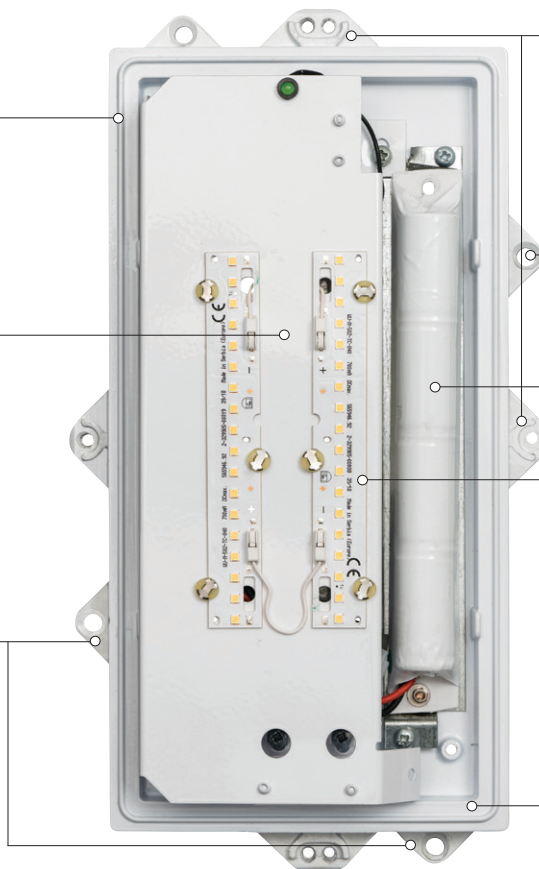
All external screws, bolts and metals are stainless steel or of non-corrosive material. Mains connections are by means of a suitable screw terminal block with a wire clamping contact. The power factor is rated at  $\geq 0.9$ .

# Key Features

Tongue provided on the base casting to fit into the silicon sponge gasket seated in the diffuser, thus achieving SABS certified IP 65 protection.

All control gear components bear the relevant national and international marks and are mounted directly onto the base casting, ensuring cool operation.

Four mounting holes provided outside the optical compartment, ensuring the integrity of the certified IP rating. The mounting holes are raised 2mm from the base, preventing rainwater from running over the luminaire surface, and are also offset from the main axis in order to prevent accidental damage to conduits during the installation process.



Four fixing holes to hold the trim ring casting to the base casting by stainless steel M5 Allen head screws, located outside the optical compartment.

Optional helicoil inserts for corrosion-resistant applications.

Integrated battery for emergency lighting configuration (optional).

It is designed to operate LEDs of up to 14W.

The grommet provided in the base casting allows the feeding through of the Teflon® wiring supplied, thus ensuring integrity of IP 65 rating.

Base casting manufactured from marine grade high-pressure die-cast aluminium, finished both outside and inside in white epoxy powder coating for added protection and reflectivity.



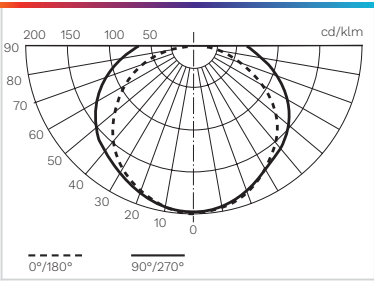
Sleek angled side profile



Opaque version for lower glare and uniform light distribution

# Light Distribution

SERIES 50 14W



# Ordering Information

Example:

SERIES 50C BLK NW 14W HVBB

ID	Protector	Colour options	LED colour	Watt	Other options
SERIES 50	C Clear Q Opaque	BLK Black (RAL 9017), Textured finish WHT White (RAL 9016), Textured finish SIL Pearl Light Grey (RAL 9022), Textured finish P/O Painted Other (RAL / Finish [Brilliant/Matt])	NW Neutral White (4000K)	7W 14W	HC Helicoil  VR Vandal-resistant screws  HV Helicoil & vandal-resistant screws  BB Battery back-up version (4 hours)

# Custom Options

Correlated colour temperature	3000K (Warm white 730)
Switching/Dimming Control	Integrated movement sensor Integrated Schröder ITERRA
Emergency	Emergency version 3 hours maintained
Extras	Adaptor ring for surface wiring

# BEKA Schröder

Experts in lightability™

**SABS**  
ISO 9001



[www.beka-schreder.co.za](http://www.beka-schreder.co.za)

Designed and manufactured by BEKA Schröder (Pty) Ltd



**LOCALLY**  
manufactured

2023-06

Copyright © BEKA Schröder (Pty) Ltd – 13 West View Road – Olifantsfontein (South Africa) • The information, descriptions and illustrations herein are of only an indicative nature. Due to advanced developments, we may be required to alter the characteristics of our products without notice. As these may present different characteristics according to the requirements of individual countries, we invite you to consult us.