

# Lighting Solutions for Service Stations

2022



# Our Product Range

BEKA Schröder is Africa's leading manufacturer of luminaires and glass fibre poles. We design and manufacture all our products in our **ISO 9001 and ISO 14001 certified factory**. We comply with IEC 60598 Standards. Our products are certified by the South African Bureau of Standards.



Since 1978, we have been designing and manufacturing luminaires which are suitable for Africa's harsh environmental conditions. More than ten years ago, we have embraced LED technology and the benefits associated with it.

We offer safe and reliable lighting solutions for:

- **Increased safety** and comfort for your customers
- Excellent first impression that will **make your service station stand out**
- Up to **70% energy savings** compared to the traditional HID equivalent
- Little to **no maintenance** on luminaires
- The **shortest payback period** and less carbon emission

As part of our commitment to provide high quality products, **we offer a warranty period of three or five years.**

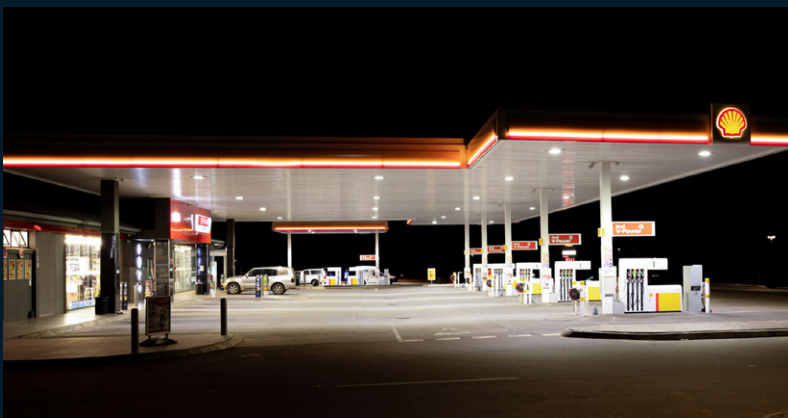
## Completed Projects



Cape Town, South Africa



Johannesburg, South Africa



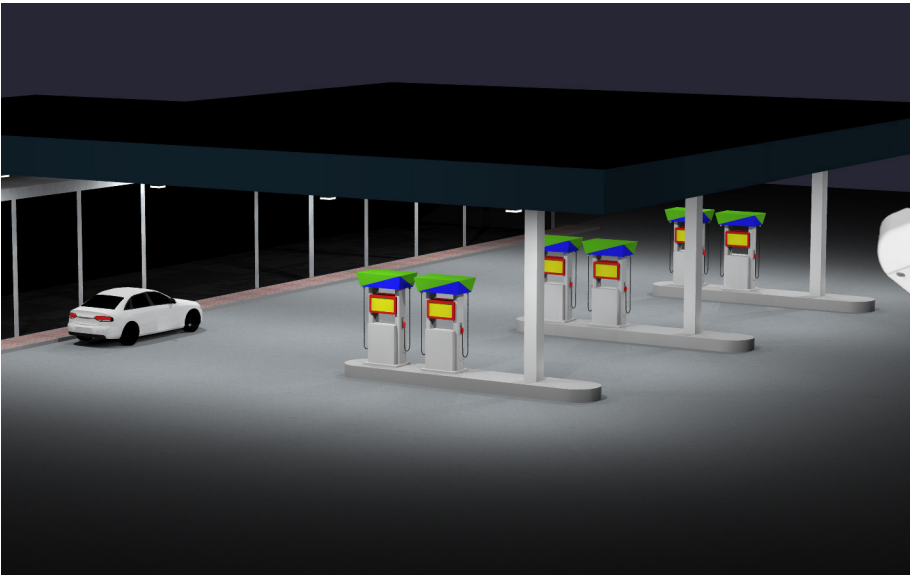
Mooketsi, South Africa



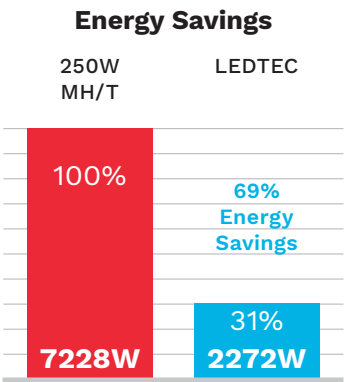
Okahandja, Namibia



# Case Study: Undercanopy Lighting of a Service Station



	Lowbay fitted with 250W Metal Halide Lamp	LEDTEC
Luminaire power consumption (W)	278	144
Total quantity	26	16
Total power consumption (W)	7228	2272



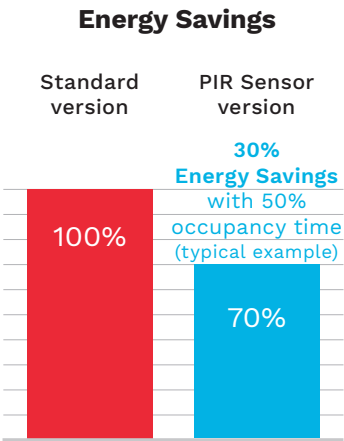
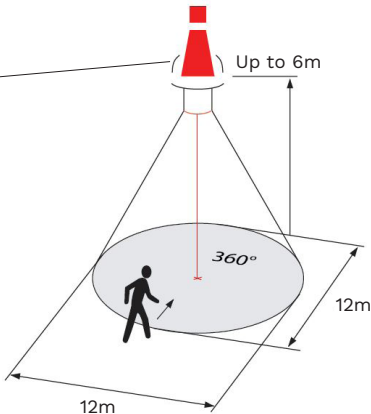
Please note: Above calculation is for demonstration purposes, please contact us for detailed energy saving and return of investment calculations.

## Integrated Movement & Daylight Sensor (optional)

The integrated motion sensor uses a specific lens to determine a detection zone. The standard lens is suitable for most applications. As an option, lenses can be provided for special needs.



Movement sensor



# Product Selection

1

**LEDTEC**  
LED lowbay

NEW

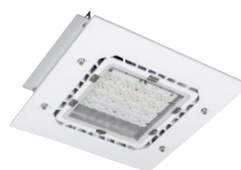


IP 66  
Max. 144W  
Up to 21,967lm



2

**LEDTEC R**  
LED lowbay



IP 66  
Max. 132W  
Up to 20,774lm

3

**LEDTEC S**  
LED lowbay



IP 66  
Max. 142W  
Up to 20,754lm

4

**YMER**  
Elegant LED street light



IP 66  
Max. 104W  
Up to 13,400lm  
(output flux)

5

**LEDLUME XP 1**  
High-performance LED street light



IP 66  
Max. 69W  
Up to 9,002lm

6

**SOLARPOLE**  
Integrated LED solar lighting solution



IP 66  
Max. 53W  
Up to 7,844lm

7

**ZELA**  
Decorative LED post top



IP 66  
Max. 46W  
Up to 6,540lm

8

**KAZELLE**  
Decorative LED post top



IP 66  
Max. 72W  
Up to 12,553lm

9

**SEMITA**  
LED bollard luminaire

NEW



IP 66  
21W  
3,020lm

10

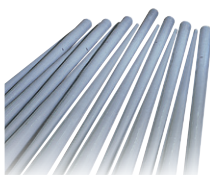
**SHUFFLE**  
Multi-purpose smart column



IP 66

11

**BEKAPOLE**  
Glass Fibre Reinforced Polyester pole range



Max. 14m

12

**LED PANEL**  
LED ceiling panel



IP 20  
Max. 65W  
Up to 5,850lm  
(output flux)



13

### BEKARONDO

Circular aluminium reflector LED downlight range

NEW



IP 20  
Max. 16W  
Up to 2,240lm

Em

14

### LEDQUAD

Recessed rectangular light

NEW

LAUNCH:  
Q3 2022



IP 20  
19W  
2,385lm

15

### QVAL

High-performance LED bulkhead



IP 66  
Max. 36W  
Up to 5,740lm

16

### SERIES 300

LED bulkhead



IP 65  
21W  
2,670lm

Em

17

### BEKA SERIES Range

LED bulkhead range



IP 66  
Max. 36W  
Up to 5,740lm

Em

18

### DUISA

Emergency LED signage range



IP 65  
130lm

Em

19

### BEKA VAPOURLINE

Industrial LED luminaire



IP 65  
Max. 49W  
Up to 8,170lm

Z2 Z21 Z22 Em

20

### ROUGHGUARD LED

Vandal-proof LED luminaire



IP 65  
Max. 56W  
Up to 8,200lm

Em

21

### OMNISTAR MICRO/MINI

LED floodlight range



IP 66  
Max. 103W  
Up to 17,220lm

22

### OMNISTAR-MIDI

LED floodlight



IP 66  
Max. 226W  
Up to 32,044lm

Z2 Z21 Z22 Em

23

### OMNIFLOOD

LED floodlight



IP 66  
Max. 138W  
Up to 22,960lm

24

### LEDFLOOD MIDI/MAXI

LED floodlight range



IP 66  
Max. 265W  
Up to 43,584lm







# BEKA Schröder

Experts in lightability™

**BEKA SCHRÉDER (PTY) LTD**  
13 West View Road  
P.O. Box 120 | Olifantsfontein | 1665  
Tel: +27 11 238 0000 | Fax: +27 11 238 0180  
E-mail: [info@beka-schreder.co.za](mailto:info@beka-schreder.co.za)

**Cape Town Branch**  
Western Cape  
92A Marine Drive | Paarden Eiland  
P.O. Box 482 | Paarden Eiland | 7420  
Tel: +27 21 510 8900  
E-mail: [ct@beka-schreder.co.za](mailto:ct@beka-schreder.co.za)

**Durban Branch**  
KwaZulu-Natal  
Unit 1 | Penral Park |  
17 Cordova Close | Briardene  
P.O. Box 40299 | Red Hill | 4071  
Tel: +27 31 563 4500  
E-mail: [dbn@beka-schreder.co.za](mailto:dbn@beka-schreder.co.za)

**Eastern Cape Region**  
East London & Gqeberha  
P. O. Box 19241 | Berea 5214  
Tel: +27 43 726 0493 | Fax: +27 43 726 0491  
E-mail: [el@beka-schreder.co.za](mailto:el@beka-schreder.co.za)

**Export Region**  
Sub-Saharan Africa & Indian Ocean Islands  
13 West View Road  
P.O. Box 120 | Olifantsfontein | 1665  
Tel: +27 11 238 0002 | Fax: +27 11 238 0180  
E-mail: [exp@beka-schreder.co.za](mailto:exp@beka-schreder.co.za)

**Gauteng Branch**  
Johannesburg  
13 West View Road  
P.O. Box 120 | Olifantsfontein | 1665  
Tel: +27 11 238 0044 | Fax: +27 11 238 0181  
E-mail: [gauteng@beka-schreder.co.za](mailto:gauteng@beka-schreder.co.za)

**Industrial Branch**  
13 West View Road  
P.O. Box 120 | Olifantsfontein | 1665  
Tel: +27 11 238 0016 | Fax: +27 11 238 0189  
E-mail: [ind@beka-schreder.co.za](mailto:ind@beka-schreder.co.za)

**Northern Branch**  
Pretoria, Free State, Mpumalanga, Limpopo,  
North-West, Northern Cape, Eswatini &  
Lesotho  
13 West View Road  
P.O. Box 120 | Olifantsfontein | 1665  
Tel: +27 11 238 0056 | Fax: +27 11 238 0184  
E-mail: [northern@beka-schreder.co.za](mailto:northern@beka-schreder.co.za)



[www.beka-schreder.co.za](http://www.beka-schreder.co.za)

